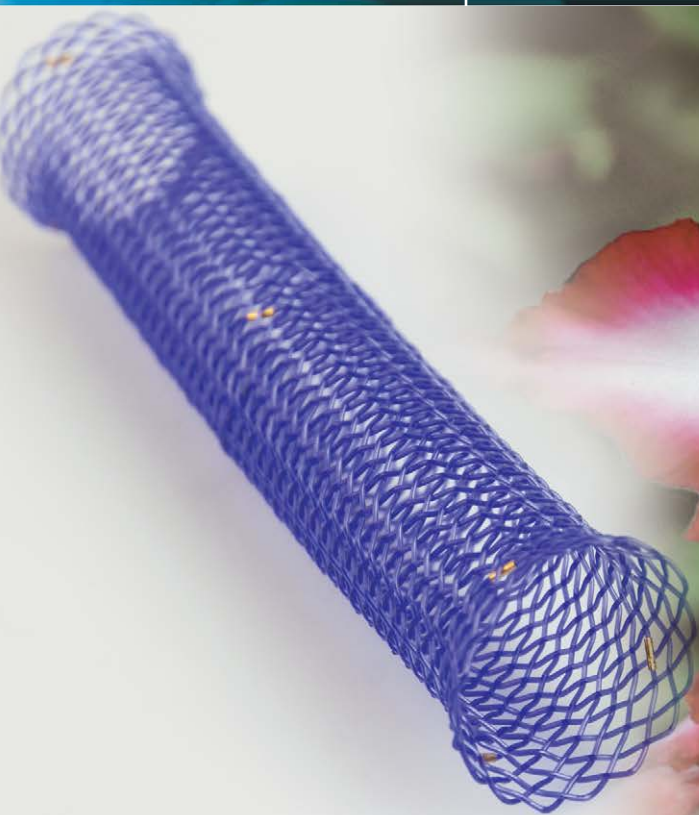
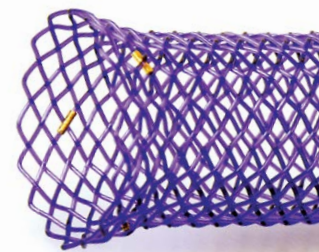


BD Stent

SX-ELLA Stent Esophageal Degradable BD



BD Stent



Biodegradation

Unique delivery system

Excellent flexibility

Radiopaque markers



Basic description

SX-ELLA Stent Esophageal Degradable BD – BD Stent

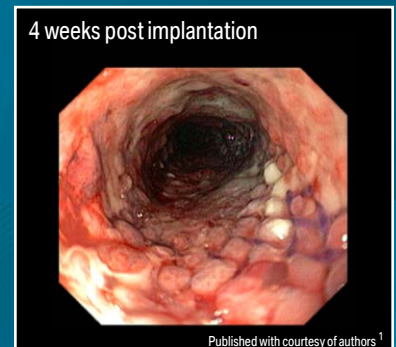
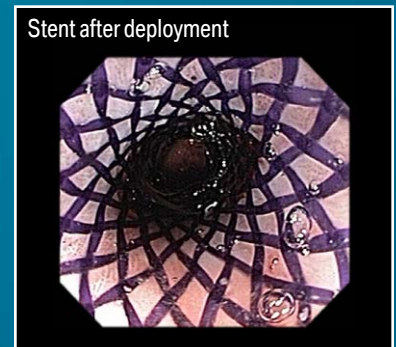
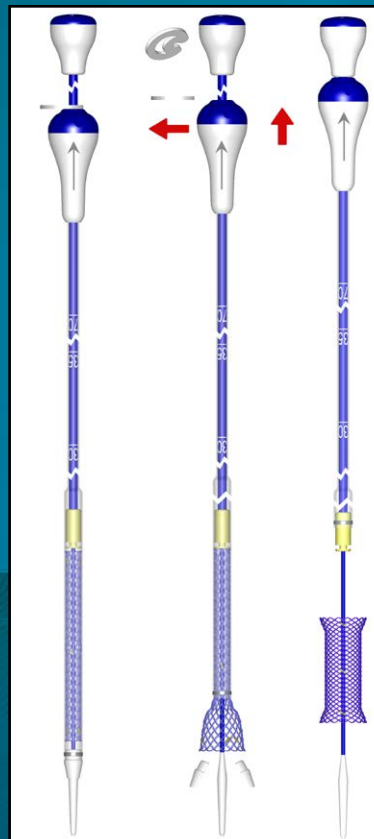
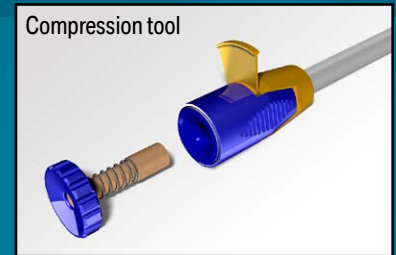
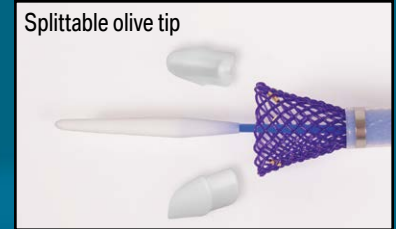
BD Stent is designed for treatment of benign esophageal strictures (peptic, anastomotic, caustic) and achalasia resistant to standard therapy.

Features / Benefits

- ☑ Biodegradable material - Polydioxanon / Disintegration of stent usually occurs after 11 – 12 weeks following implantation / No need for removal
- ☑ PULL-back delivery system / Splittable olive tip / Automatic detachment while stent starts releasing / Prevention of olive entrapment / Easy insertion and safe removal of delivery system
- ☑ Radiopaque markers / Accurate stent positioning
- ☑ Anti-migration design / Dual flared design / Reduced migration rates
- ☑ Integrity and radial force of stent is maintained for 6 – 8 weeks following implantation / Extended period of dilation compared to conventional methods
- ☑ Simple compression procedure / Compression tool available

Additional description

Stent is supposed to be compressed by compression tool into delivery system just prior to implantation
 6 mm / 9.4 mm (18 F / 28 F) delivery system, available in standard length of 75 cm
 Recommended guide wire: 0.035" (0.89 mm) ultra stiff / Minimum length 220 cm



Published with courtesy of authors¹

¹. van Boeckel PG, Vleggaar FP, Siersema PD. A comparison of temporary self-expanding plastic and biodegradable stents for refractory benign esophageal strictures. Clin Gastroenterol Hepatol. 2011;9(8):653-9



Available sizes

REF No.	Stent body diameter [mm]	Stent flares diameter [mm]	Stent length [mm]
019-10A-23/18/23-060	18	23	60
019-10A-23/18/23-080			80
019-10A-23/18/23-100			100
019-10A-25/20/25-060	20	25	60
019-10A-25/20/25-080			80
019-10A-25/20/25-100			100
019-10A-28/23/28-060	23	28	60
019-10A-28/23/28-080			80
019-10A-28/23/28-100			100
019-10A-31/25/31-060	25	31	60
019-10A-31/25/31-080			80
019-10A-31/25/31-100			100
019-10A-31/25/31-135			135

Distributor:

Manufacturer:

ELLA-CS, s.r.o.

Milady Horakove 504, 500 06 Hradec Kralove
 Czech Republic

Tel.: +420 495 279 111 Fax: +420 495 265 655
 E-mail: info@ellacs.eu URL: www.ellacs.eu