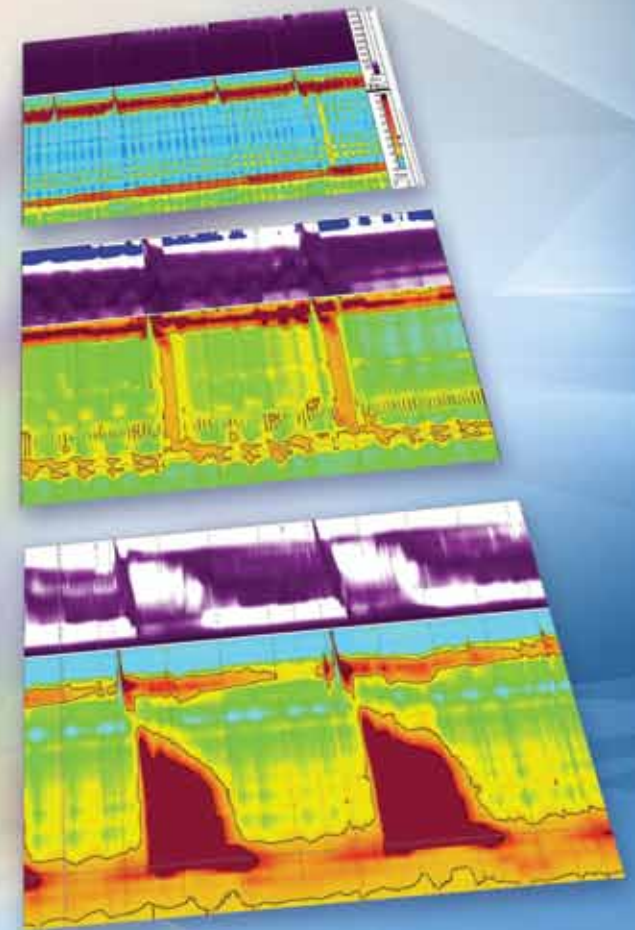


# High Resolution Impedance Manometry...

## Featuring the *ALL NEW* **inSIGHTULTIMA** Platform

- ▲ HRIM is a leading edge, comprehensive test of both esophageal pressure and bolus transit dynamics
- ▲ The high resolution array of circumferential pressure sensors and impedance channels dispersed across the entire anatomic region provides concurrent manometric and bolus transit dynamics from a single probe position with minimal time and effort
- ▲ BioVIEW Analysis software provides a comprehensive set of tools that spans conventional analysis and High Resolution Esophageal Pressure Topography (HREPT) and dovetails with the Chicago Classifications



# inSIGHT ULTIMA

The single platform for HRiM, HRaM, Sphincter of Oddi, Colonic and Small Bowel manometry



*"The Guidelines of the Diagnosis and Management of Gastroesophageal Reflux Disease, published in 2013, strongly recommend that all patients should undergo preoperative manometry to rule out achalasia or scleroderma-like esophagus."<sup>1</sup>*

## SANDHILL UNIVERSITY - A HIGHER LEVEL OF TRAINING AND EDUCATION

Providing great products is just the first step in a long term relationship with our customers..... we believe that training and education are the key components to even the best equipment, enabling you to provide outstanding patient care. That's why at Sandhill University, we have developed a comprehensive set of options to meet your needs, including:

- Sandhill University – Denver
- Sandhill University – Online
- CyberCoach
- CyberTech
- SuperVision MD™



1. "Guidelines for the Diagnosis and Management of Gastroesophageal Reflux Disease"; Philip O. Katz, Lauren B. Gerson and Marcelo F. Vela, *Am J Gastroenterol advance online publication*, February 19, 2013; doi:10.1038/ajg.2012.444

**SANDHILL**  
scientific

Sandhill Scientific, Inc  
9150 Commerce Center Circle, #500  
Highlands Ranch, CO 80129 USA  
800.468.4556 303.470.7020  
Fax: 303.470.2975

[www.sandhillsci.com](http://www.sandhillsci.com)